

# **Photo Point Monitoring and Wetland Update 2010**

# Photo Point Monitoring



Spalding Bridge-5-26-10



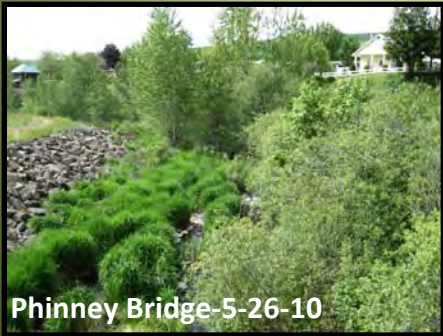
Spalding Bridge-6-3-10



Spalding Bridge-8-9-10



Spalding Bridge-11-18-10



Phinney Bridge-5-26-10



Phinney Bridge-6-3-10



Phinney Bridge-8-9-10



Phinney Bridge-11-18-10

- ◆ **Stream Flow**

- ◆ There are 21 sites from Spalding Park to Winchester, ID.

- ◆ **Purpose-**

- ◆ Document Lapwai and Big Canyon Creek seasonal stream flows.

# Photo Point Monitoring



May 2007



April 2007

- ◆ Cow Creek
  - ◆ There are 7 sites total.
- ◆ Purpose-
  - ◆ Document Direct Seed practice implementations in the Cow Creek watershed.

# Photo Point Monitoring



- ◆ Tammany 319
  - ◆ There are 7 sites total.
- ◆ Purpose-
  - ◆ Document direct seed practice installation in the Tammany Creek watershed.

# Photo Point Monitoring



- ◆ NIAFO 319
  - ◆ There are 3 sites total.
- ◆ Purpose-
  - ◆ Document AFO 319 project effectiveness.

# Photo Point Monitoring



- ◆ Lapwai BPA
  - ◆ There are 17 sites total.
- ◆ Purpose-
  - ◆ Document Lapwai BPA project effectiveness.

# Photo Point Monitoring



- ◆ **Big Canyon BPA**
  - ◆ There are 17 sites total.
- ◆ **Purpose-**
  - ◆ Document Big Canyon BPA project effectiveness.

# Photo Point Monitoring

- ◆ **Miscellaneous**
  - ◆ There are 5 sites total.
- ◆ **Purpose-**
  - ◆ Document miscellaneous conservation practices success



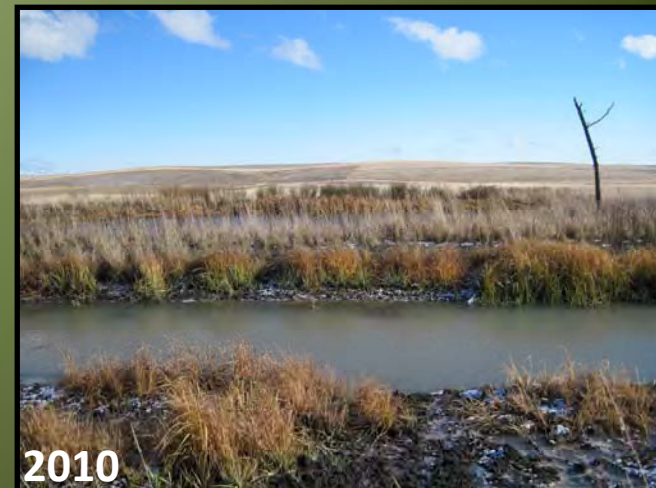
# Wetlands

- ◆ There were two wetlands installed in 2007 totaling 3 acres.
- ◆ They have one year left of maintenance.
- ◆ The landowners have done a great job on maintaining them since installed.
- ◆ The Core and IDT have been to each site to do a review.

# Wetlands



WMIT-01



# Wetlands

2007



2010



WMIT-02